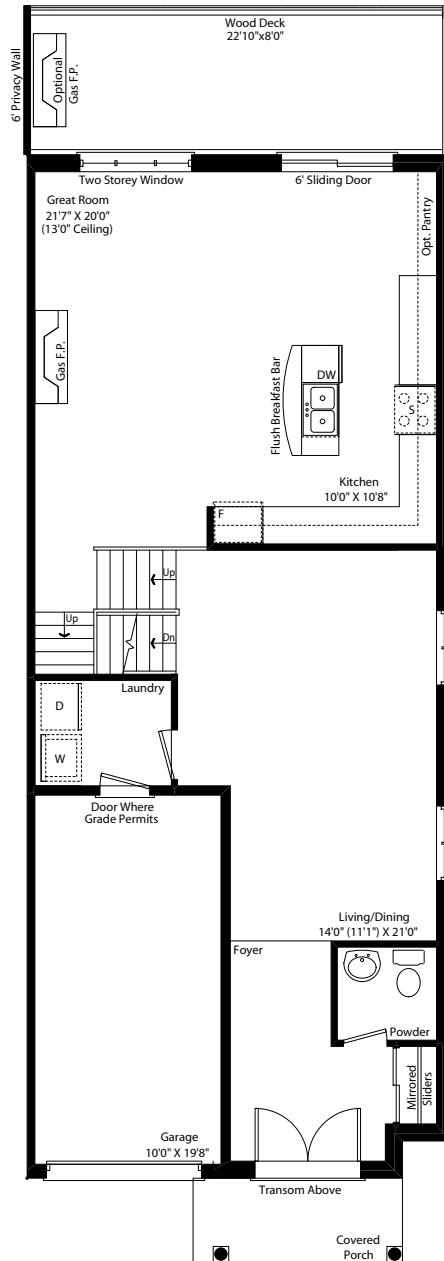
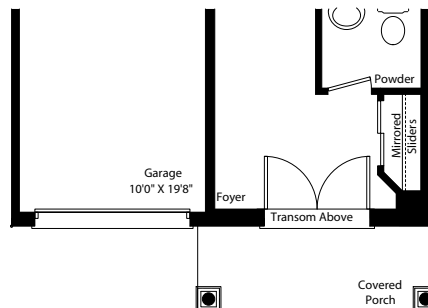


# THE STRATFORD II 2314 sq. ft.



GROUND FLOOR ELEV. 'A'



PARTIAL GROUND FLOOR ELEV. 'B'

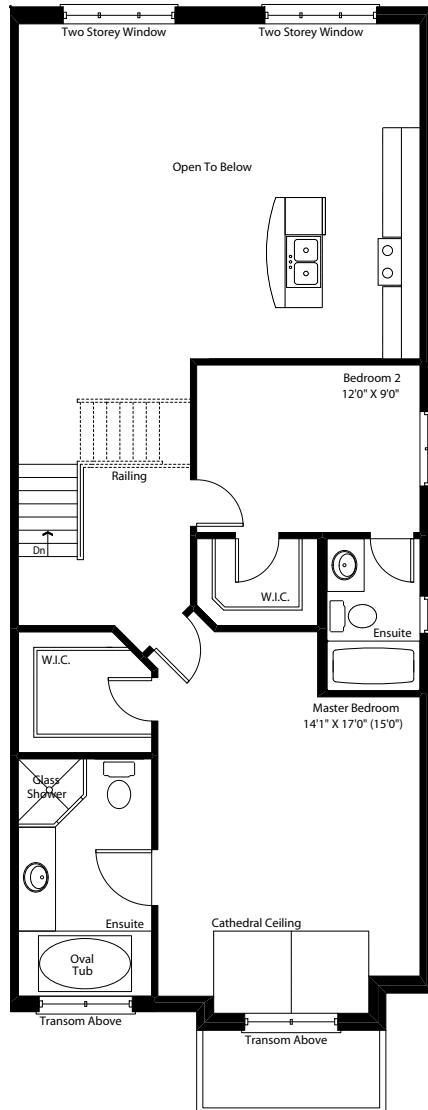


Dimensions, specifications, layouts, window sizes, and materials are approximate only, may vary, and are subject to change as provided in the Agreement of Purchase & Sale. Plans may be reversed. Illustrations are artist's concept. E.&O.E. SD-6.

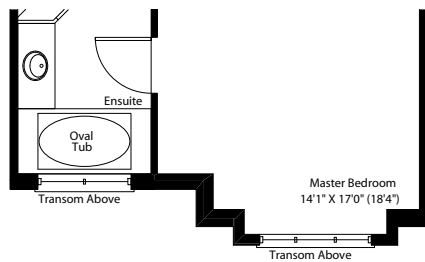


www.edenOak.com

# THE STRATFORD II 2314 sq. ft.



SECOND FLOOR ELEV. 'A'



PARTIAL SECOND FLOOR ELEV. 'B'

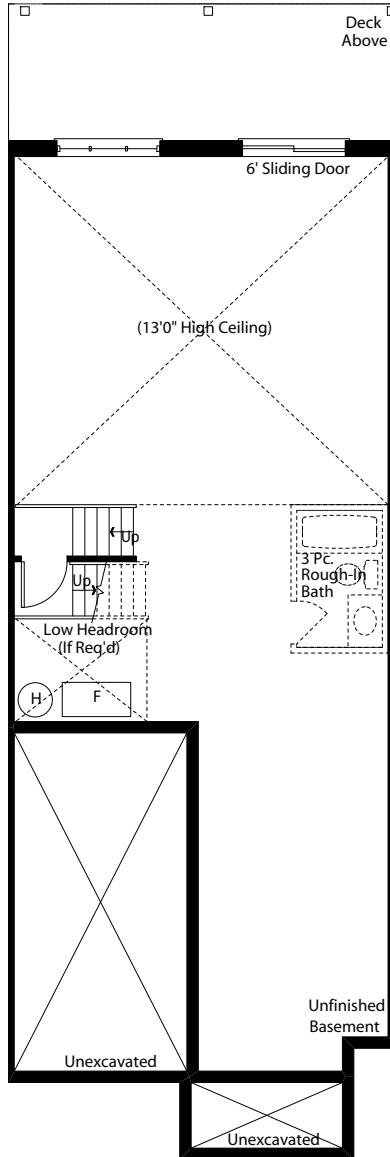


Dimensions, specifications, layouts, window sizes, and materials are approximate only, may vary, and are subject to change as provided in the Agreement of Purchase & Sale. Plans may be reversed. Illustrations are artist's concept. E.&O.E. SD-6.

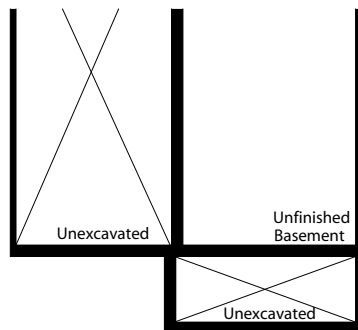


[www.edenoak.com](http://www.edenoak.com)

# THE STRATFORD II 2314 sq. ft.



BASEMENT FLOOR ELEV. 'A'



PARTIAL BASEMENT FLOOR ELEV. 'B'



Dimensions, specifications, layouts, window sizes, and materials are approximate only, may vary, and are subject to change as provided in the Agreement of Purchase & Sale. Plans may be reversed. Illustrations are artist's concept. E.&O.E. SD-6.



[www.edenoak.com](http://www.edenoak.com)