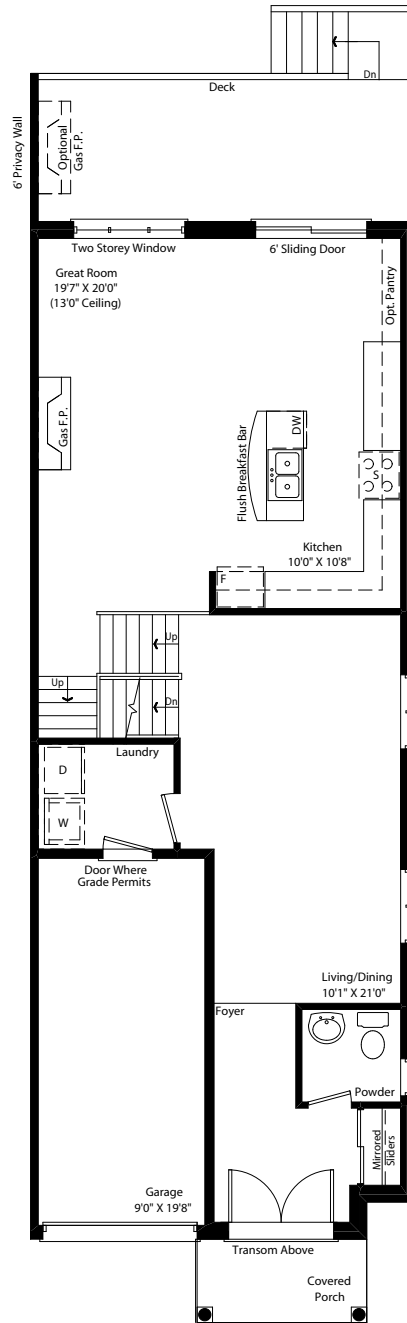
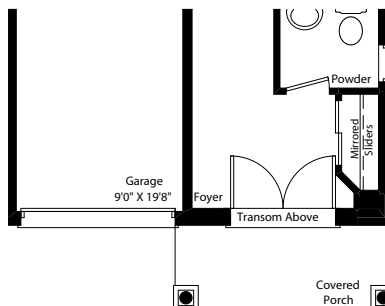


THE STRATFORD 2119 sq. ft.

(1737 sq.ft. + 382 sq.ft. open to below)



GROUND FLOOR ELEV. 'A'



PARTIAL GROUND FLOOR ELEV. 'B'



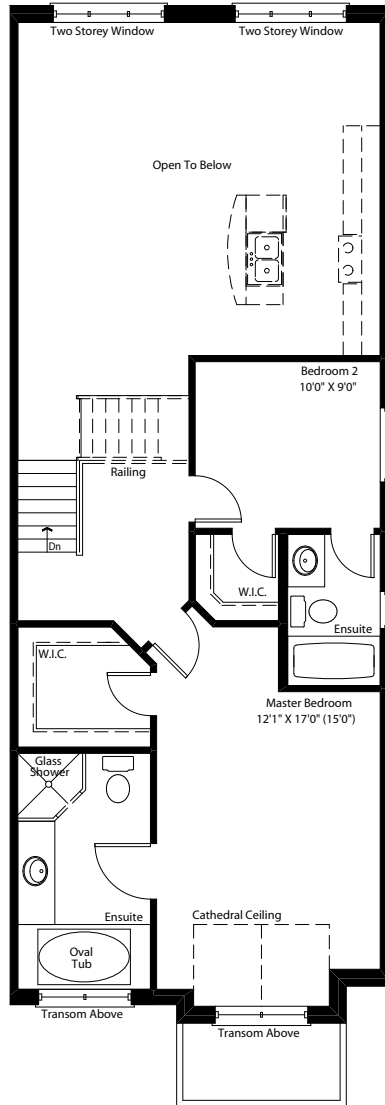
Dimensions, specifications, layouts, window sizes, and materials are approximate only, may vary, and are subject to change as provided in the Agreement of Purchase & Sale. Plans may be reversed. Illustrations are artist's concept. E.&O.E. SD-3.



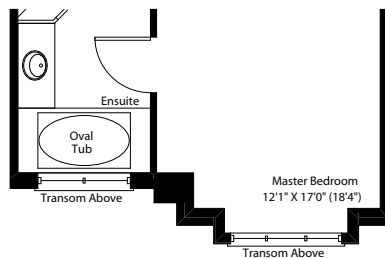
www.edenOak.com

THE STRATFORD 2 | 19 sq. ft.

(1737 sq.ft. + 382 sq.ft. open to below)



SECOND FLOOR ELEV. 'A'



PARTIAL SECOND FLOOR ELEV. 'B'



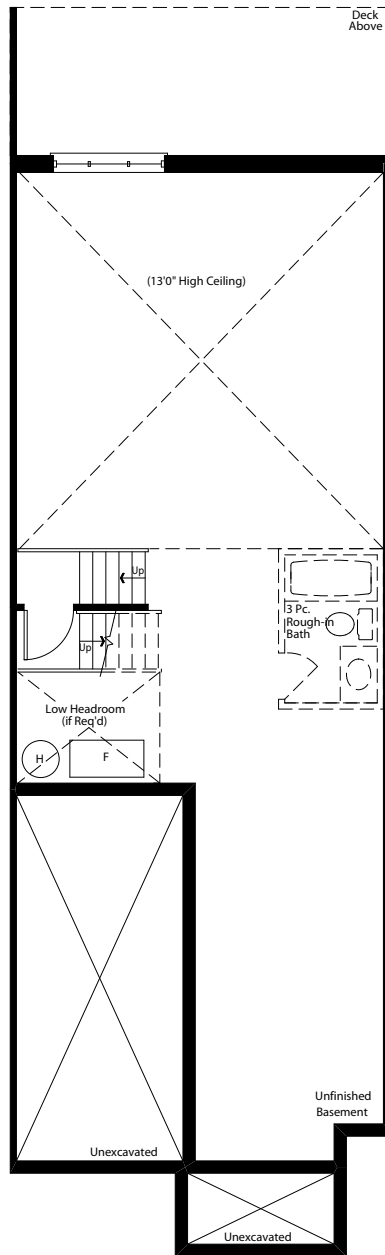
Dimensions, specifications, layouts, window sizes, and materials are approximate only, may vary, and are subject to change as provided in the Agreement of Purchase & Sale. Plans may be reversed. Illustrations are artist's concept. E.&O.E. SD-3.



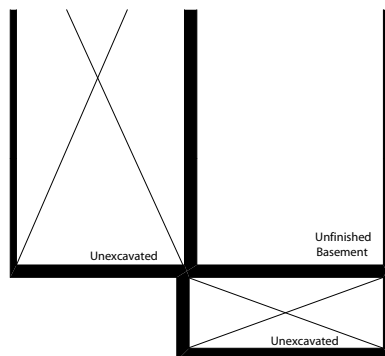
www.edenOak.com

THE STRATFORD 2119 sq. ft.

(1737 sq.ft. + 382 sq.ft. open to below)



BASEMENT FLOOR ELEV. 'A'



PARTIAL BASEMENT FLOOR ELEV. 'B'



Dimensions, specifications, layouts, window sizes, and materials are approximate only, may vary, and are subject to change as provided in the Agreement of Purchase & Sale. Plans may be reversed. Illustrations are artist's concept. E.&O.E. SD-3.



www.edenoak.com